

# Mazak

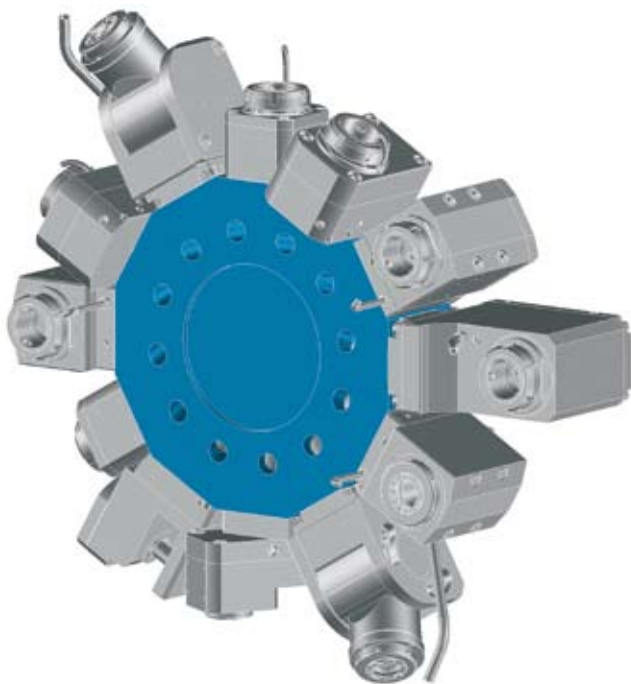
## QUICK TURN NEXUS 100 + SUPER QUICK TURN 10

### Data

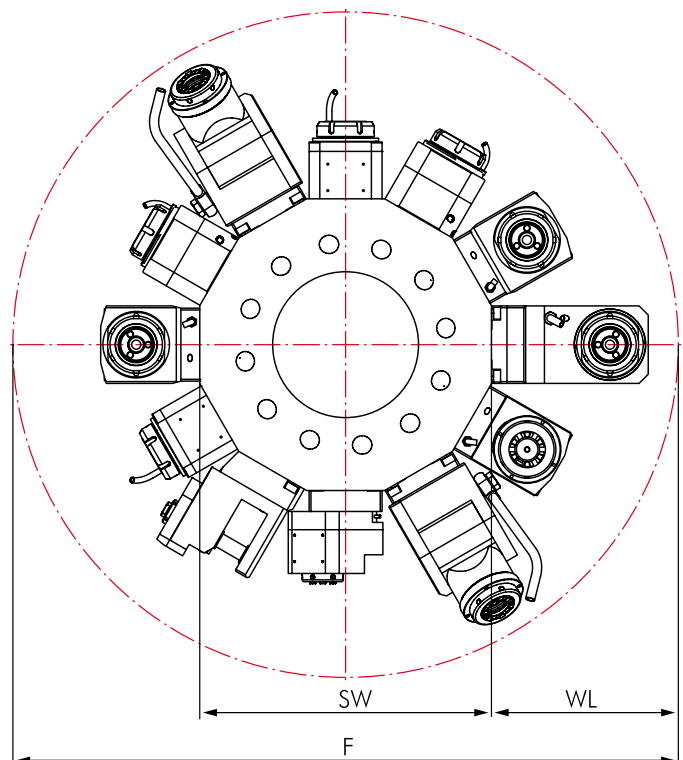
Machine type Series	Turret Stations
<b>QTNX 100/100-II</b> M / MS / MY / MSY	12
<b>QTNX 200</b> M / MS / MY / MSY	16
<b>QTNX 250</b> M / MS / MY / MSY	16
<b>SQT 10</b> M / MS	12
<b>SQT 100</b> M / MS	12
<b>SQT 15</b> M / MS	16
<b>SQT 200</b> M / MS	16
<b>SQT 250</b> M / MS	16



### Star-type Turret VDI 40



### Interference Circles



Machine type Series	F	SW	WL
<b>QTNX 100</b>	564	286	139
<b>SQT 10</b>	564	286	139

# Mazak

## QUICK TURN NEXUS 100 + SUPER QUICK TURN 10

### Driven Toolholders

	Page		Page
<b>Straight Unit, Offset type</b>	114		
		<b>Angle Unit, adjustable 0-100°</b>	117
			
<b>Angle Unit</b>	115		
		<b>Y-Unit, adjustable ± 90°</b>	118
			
<b>Angle Unit, 2-Axis</b>	116		
		<b>Saw Blade Holder</b>	119
			

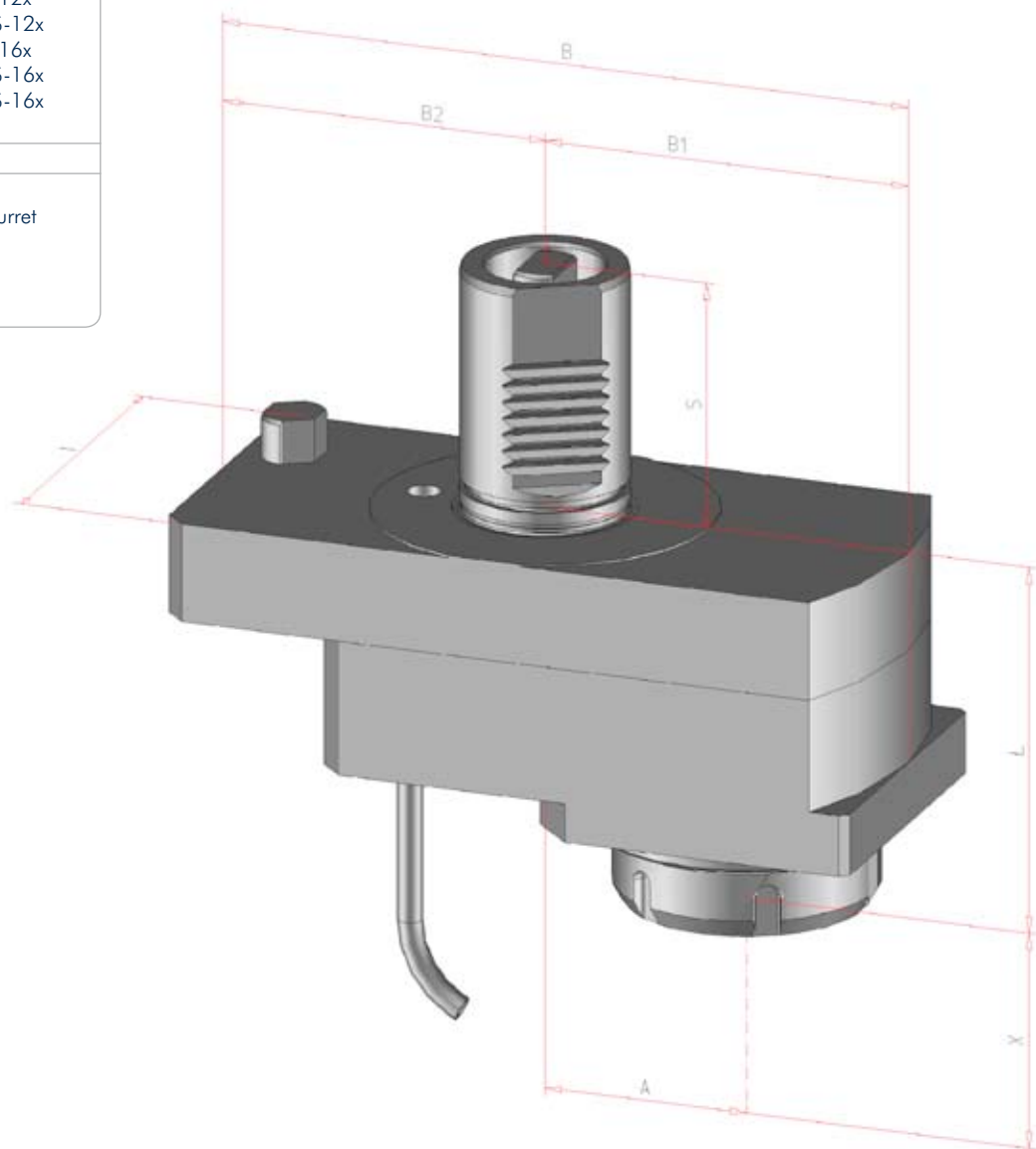
### Options and Accessories

<b>mi Toolholders</b>		mi System Description Toolholders Accessories	275 278-283 283-284
<b>Static Toolholders for MAZAK</b>		Static Toolholders Accessories	289-293 293-294
<b>Accessories</b>		Collets DIN 6499 Threading Collets Wrenches Clamping Nuts Sleeves and Bushings	309 309 309 309 310



## Straight Unit, Offset and without Offset T type

for Manufacturer	
<b>Mazak</b>	
for Machine type	
<b>NEXUS QTNX 100/100-II SQT 10</b>	
<b>QTNX</b>	<b>SQT</b>
100 M-12x	10 M/MS-12x
200 M/MS-16x	100 M/MS-12x
250 M/MS-16x	15 M/MS-16x
	200 M/MS-16x
	250 M/MS-16x
Data	
Turret type	Star-type Turret
Shank	VDI 40
Drive	Tang
SW	10 mm



Order No.	Tool holder	Clamping range mm	Torque max.	n1/n2 (max.) (r.p.m.)	Gear Ratio	Coolant	X mm	L mm	A mm	B mm	B1 mm	B2 mm	S mm	T mm	MAZAK Ref. #
124042	ER 32	1,0-20	50 Nm	6.500 / 6.500	i = 1:1	external	49	90	50	170	90	80	60	80	532 480 30200
124268	ER 32	1,0-20	50 Nm	6.500 / 6.500	i = 1:1	internal	49	90	50	170	90	80	60	80	
124068	ER 25	0,5-16	25 Nm	6.500 / 13.000	i = 1:2	external	67,5	71,5	50	174	90	84	60	68	
124345	ER 25	0,5-16	25 Nm	6.500 / 13.000	i = 1:2	internal	49	90	50	170	90	80	60	80	
167934	MI 50		50 Nm	6.500 / 6.500	i = 1:1	internal	49	90	50	170	90	80	60	80	
<b>Without offset:</b>															
124265	ER 32	1,0-20	80 Nm	6.500/6.500	i = 1:1	internal	54	85	0	87	38	49	60	80	
167717	ER 32	1,0-20	80 Nm	6.500/6.500	i = 1:1	external	54	85	0	87	38	49	60	80	

## Angle Unit, Offset type

for Manufacturer

# Mazak

for Machine type

### NEXUS QTNX 100/100-II SQT 10

#### QTNX

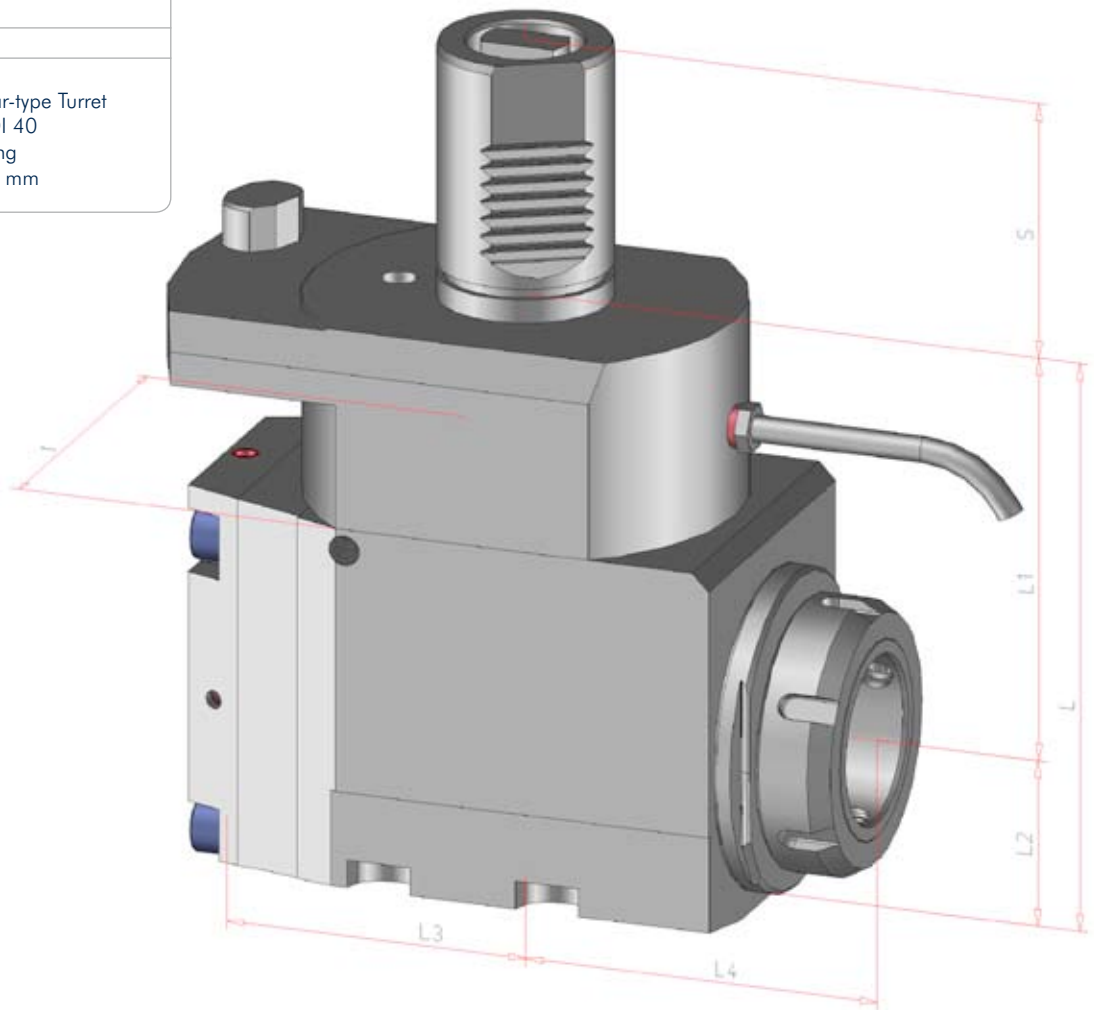
100 M-12x  
200 M/MS-16x  
250 M/MS-16x

#### SQT

10 M/MS-12x  
100 M/MS-12x  
15 M/MS-16x  
200 M/MS-16x  
250 M/MS-16x

Data

Turret type	Star-type Turret
Shank	VDI 40
Drive	Tang
SW	10 mm



Order No.	Tool holder	Clamping range mm	Torque max.	n1/n2 (max.) (r.p.m.)	Gear Ratio	Coolant	L mm	L1 mm	L2 mm	L3 mm	L4 mm	S mm	T mm	MAZAK Ref. #
124651	ER 32	1,0-20	50 Nm	6.500 / 6.500	i = 1:1	external	134	95	39	69	76	60	85	532 480 03030
124887	ER 32	1,0-20	50 Nm	6.500 / 6.500	i = 1:1	internal	135	95	40	75,5	76	60	85	
124693	ER 25	0,5-16	25 Nm	6.500 / 13.000	i = 1:2	external	129	95	34	40	78	60	80	
124921	ER 25	0,5-16	25 Nm	6.500 / 13.000	i = 1:2	internal	134	95	39	72,5	75	60	80	
167933	MI 50		50 Nm	6.500 / 6.500	i = 1:1	internal	134	95	39	71	83,5	60	80	
124886	ER 25	0,5-16	50 Nm	6.500 / 6.500	i = 1:1	internal	135	95	39	75,5	80	60	80	
124652*	ER 32	1,0-20	50 Nm	6.500 / 6.500	i = 1:1	external	134	95	39	76	69	60	80	

\* Type for Back Sub-Spindle

## Angle Unit, 2-Axis

for Manufacturer

**Mazak**

for Machine type

**NEXUS QTNX 100/100-II  
SQT 10**

**QTNX**

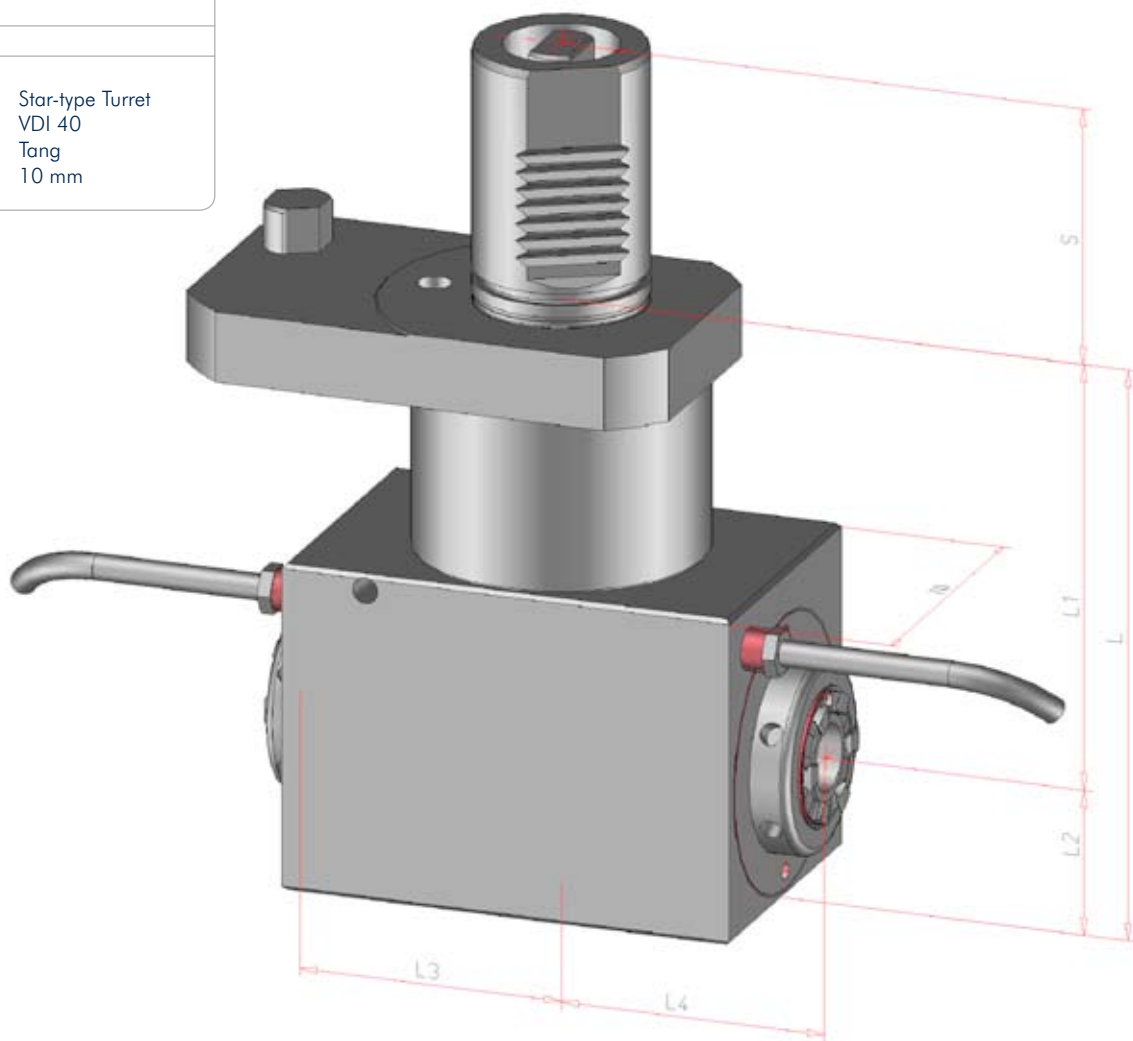
100 M-12x  
200 M/MS-16x  
250 M/MS-16x

**SQT**

10 M/MS-12x  
100 M/MS-12x  
15 M/MS-16x  
200 M/MS-16x  
250 M/MS-16x

Data

Turret type	Star-type Turret
Shank	VDI 40
Drive	Tang
SW	10 mm



Order No.	Tool holder	Clamping range mm	Torque max.	n1/n2 (max.) (r.p.m.)	Gear Ratio	Coolant	L mm	L1 mm	L2 mm	L3 mm	L4 mm	S mm	T mm	MAZAK Ref. #
124649	2 x ER 25	0,5-16	25 Nm	6.500 / 6.500	i = 1:1	external	134	100	34	62	62	60	70	
167306	2 x ER 32	1,0-20	50 Nm	6.500 / 6.500	i = 1:1	internal	134	95	39	70	93	60	80	

# Angle Unit, adjustable 0-100°

for Manufacturer

## Mazak

for Machine type

**NEXUS QTNX 100/100-II**  
**SQT 10**

**QTNX**

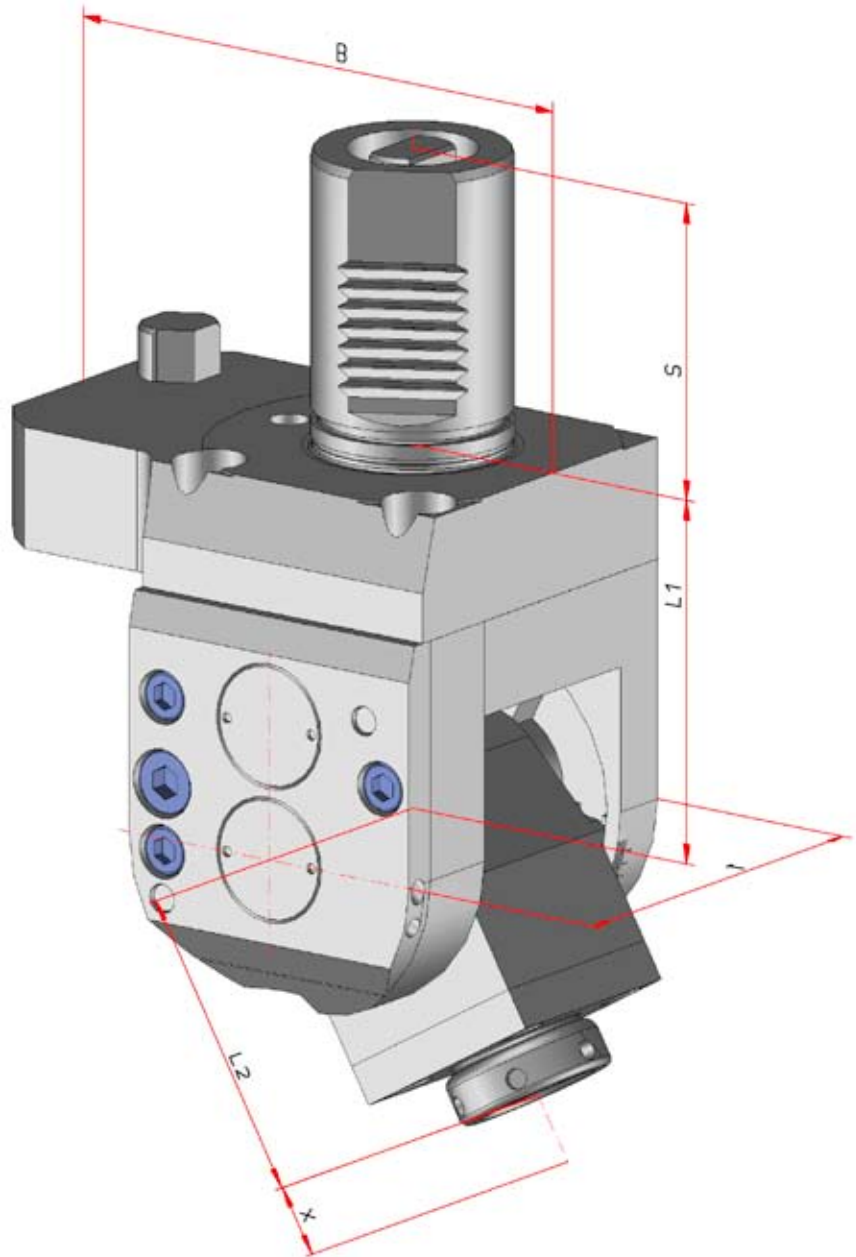
100 M-12x  
200 M/MS-16x  
250 M/MS-16x

**SQT**

10 M/MS-12x  
100 M/MS-12x  
15 M/MS-16x  
200 M/MS-16x  
250 M/MS-16x

Data

Turret type	Star-type Turret
Shank	VDI 40
Drive	Tang
SW	10 mm



Order No.	Tool holder	Clamping range mm	Torque max.	n1/n2 (max.) (r.p.m.)	Gear Ratio	Coolant	X mm	L mm	L1 mm	L2 mm	B mm	S mm	T mm	MAZAK Ref. #
125034	ER 16	0,5-10	6 Nm	6.500 / 6.500	i = 1:1	external	4,5	134,5	73,5	61	114	60	80,5	
125055	ER 16	0,5-10	6 Nm	3.750 / 15.000	i = 1:4	external	4,5	134,5	73,5	61	114	60	80,5	

# Y-Unit, adjustable $\pm 90^\circ$

for Manufacturer

**Mazak**

for Machine type

**NEXUS QTNX 100/100-II  
SQT 10**

**QTNX**

100 M-12x  
200 M/MS-16x  
250 M/MS-16x

**SQT**

10 M/MS-12x  
100 M/MS-12x  
15 M/MS-16x  
200 M/MS-16x  
250 M/MS-16x

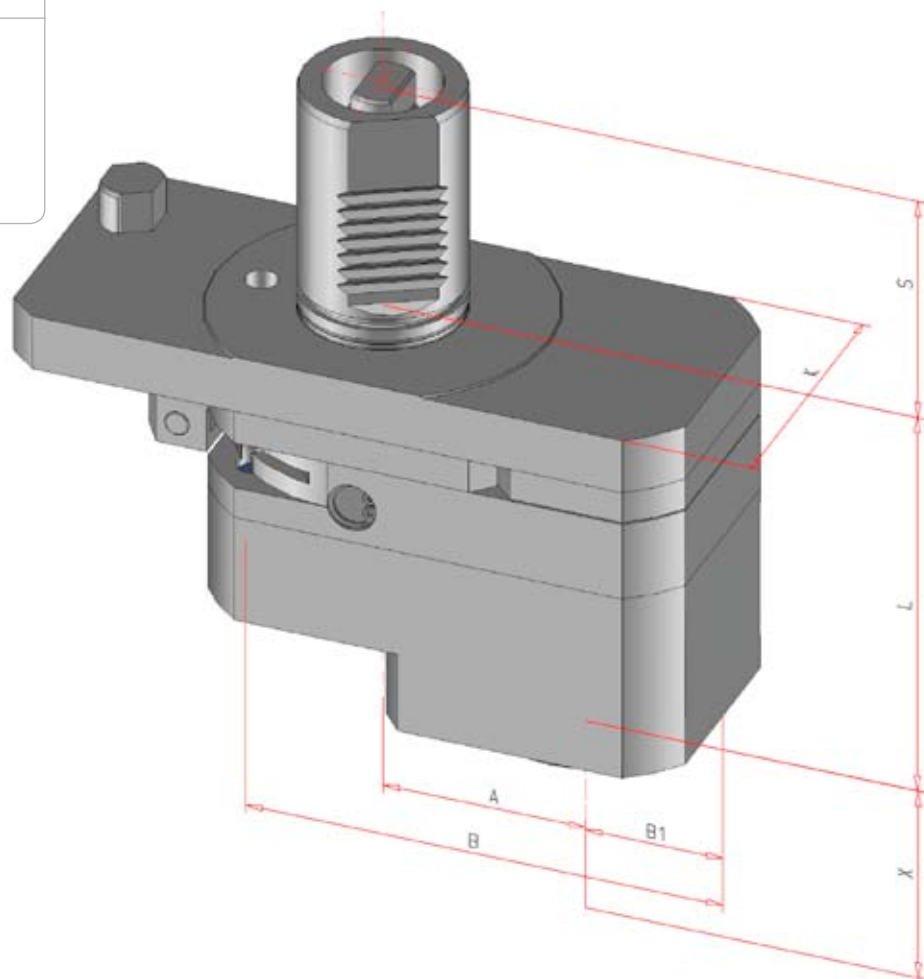
Data

Turret type  
Type

Star-type Turret  
 $\pm 90^\circ$  continuous  
adjustable

Shank  
Drive  
SW

VDI 40  
Tang  
10 mm



Order No.	Tool holder	Clamping range mm	Torque max.	n1/n2 (max.) (r.p.m.)	Gear Ratio	Coolant	X mm	L mm	A mm	B mm	S mm	T mm	MAZAK Ref. #
124120	ER 25	0,5-16	25 Nm	6.500 / 6.500	i = 1:1	external	39	100	50	164	60	68	

# Saw Blade Holder

for Manufacturer

**Mazak**

for Machine type

**NEXUS QTNX 100/100-II  
SQT 10**

**QTNX**

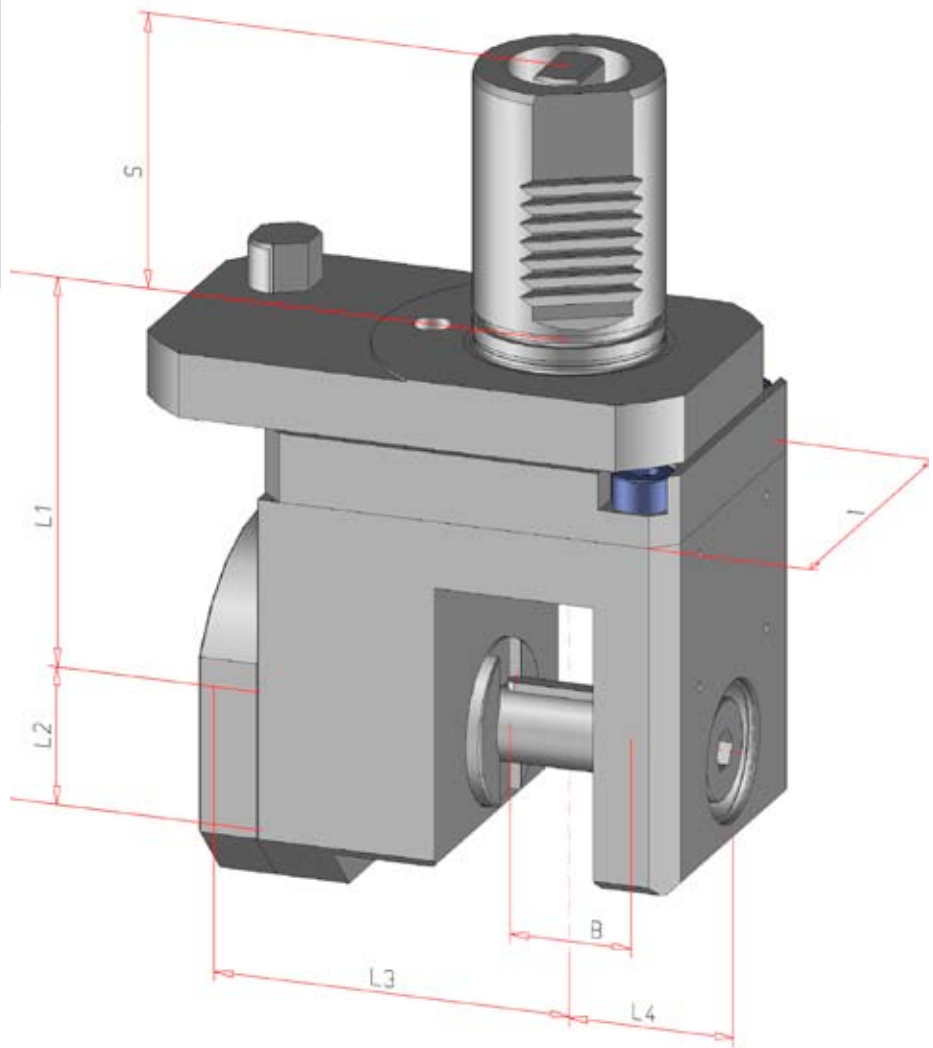
100 M-12x  
200 M/MS-16x  
250 M/MS-16x

**SQT**

10 M/MS-12x  
100 M/MS-12x  
15 M/MS-16x  
200 M/MS-16x  
250 M/MS-16x

Data

Turret type	Star-type Turret
Shank	VDI 40
Drive	Tang
SW	10 mm



Order No.	Fitting dia. mm	Torque max.	n1/n2 (max.) (r.p.m.)	Gear Ratio	Kühlung	L mm	L1 mm	L2 mm	L3 mm	L4 mm	B mm	S mm	T mm	MAZAK Ref. #
125111	16	20 Nm	6.500 / 2.450	i = 2,66:1	external	115	85	30	77,5	36	25	60	72	
125110	22	20 Nm	6.500 / 2.450	i = 2,66:1	external	115	85	30	77,5	36	25	60	72	