

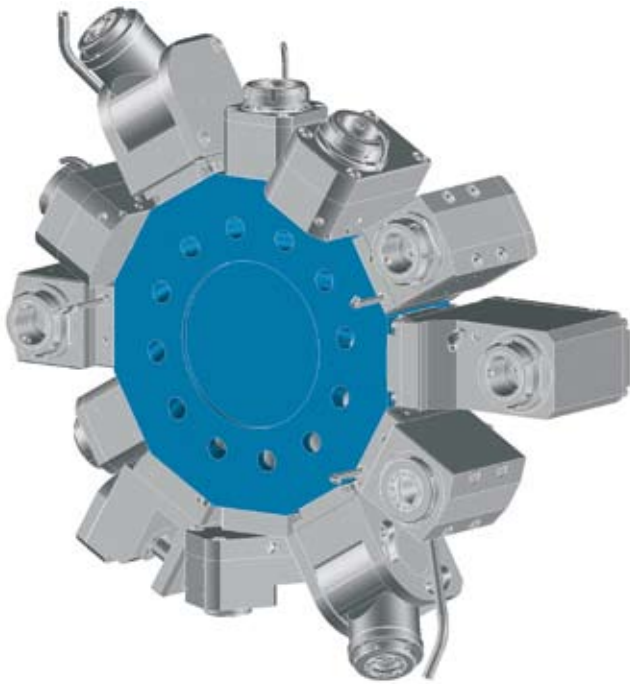
# Mazak MULTIPLEX 630 / 6300

## Data

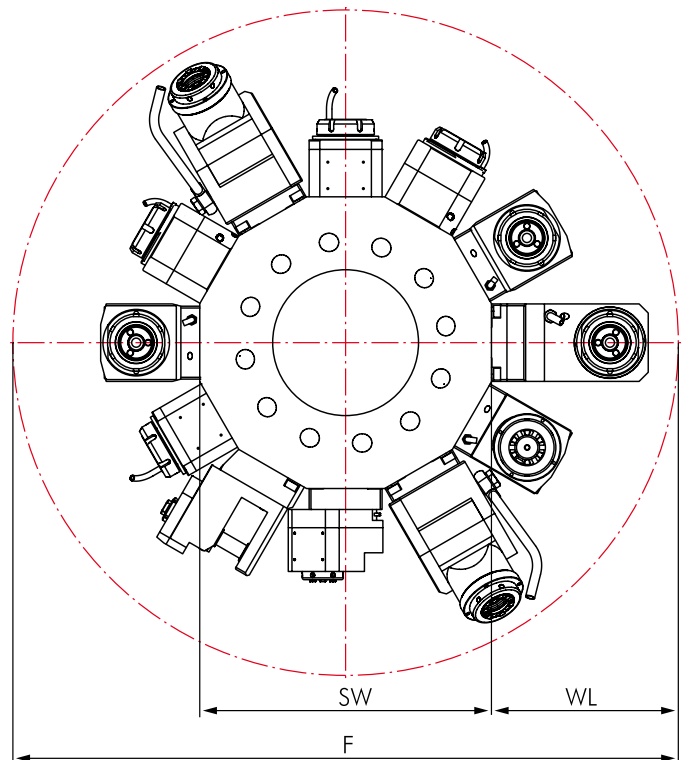
Machine type Series	Turret Stations
<b>MP 630</b>	12
<b>MP 6300/6300 Y</b>	12



## Star-type Turret VDI 50



## Interference Circles



Machine type Series	F	SW	WL
<b>Multiplex 630 / 6300</b>	840	380	230

## Driven Toolholders

	Page		Page
<b>Straight Unit, Offset type</b>	150	<b>Angle Unit</b>	151

## Options and Accessories

<b>mi Toolholders</b>		mi System Description Toolholders Accessories	275 278-283 283-284
<b>Static Toolholders for MAZAK</b>		Static Toolholders Accessories	289-293 293-294
<b>Accessories</b>		Collets DIN 6499 Threading Collets Wrenches Clamping Nuts Sleeves and Bushings	309 309 309 309 310



## Straight Unit, Offset type

for Manufacturer

**Mazak**

for Machine type

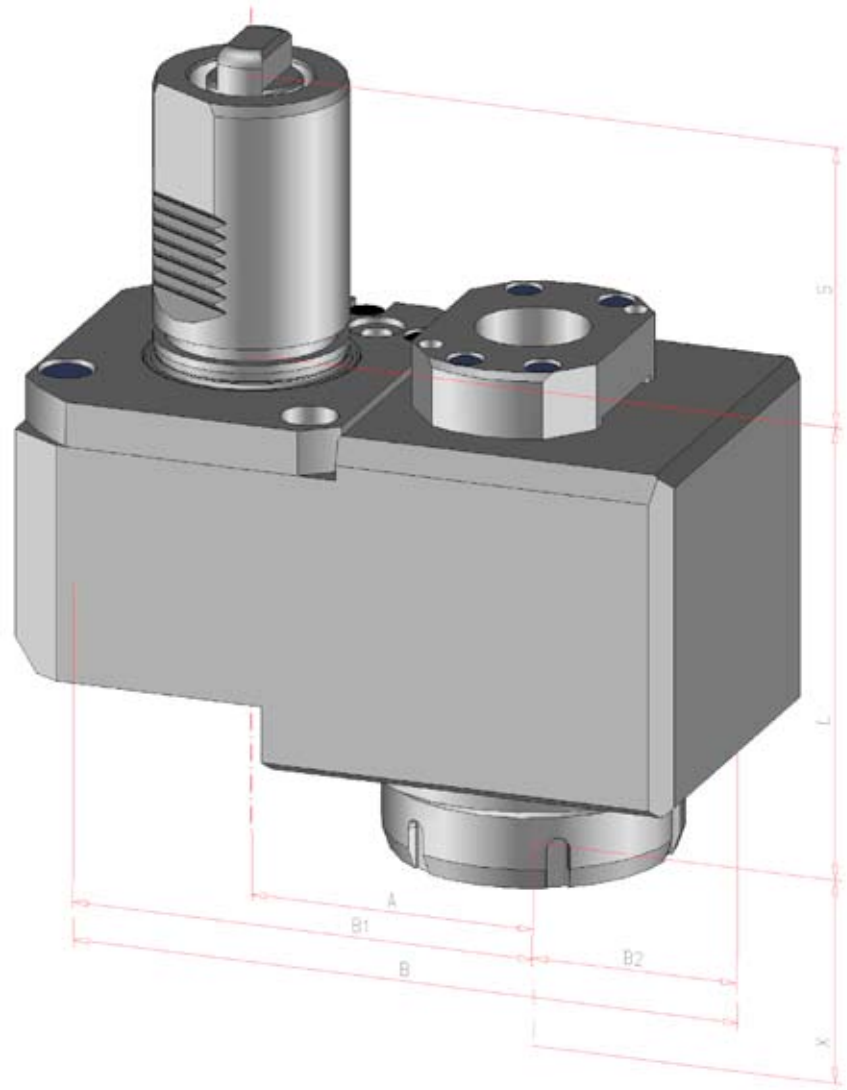
**MULTIPLEX 630 / 6300**

**MP**

630 - 12x  
6300 - 12x

Dimensions

Turret type	Star-type Turret
Shank	VDI 50
Drive	Tang
SW	12 mm



Order No.	Tool holder	Clamping range mm	Torque max.	n1/n2 (max.) (r.p.m.)	Gear Ratio	Coolant	X mm	L mm	A mm	B mm	B1 mm	B2 mm	S mm	T mm	MAZAK Ref. #
131556	ER 40	2,0-26	100 Nm	6.500 / 6.500	i = 1:1	internal	107,5	122,5	76	186	131	55	75	100	
100245	mi 63		100 Nm	6.500 / 6.500	i = 1:1	internal	109	121	76	179	124	55	75	100	
102793	SK 40		50 Nm	5.400 / 5.400	i = 1:1	external	131	99	76	185	126	59	75	96	

# Angle Unit

for Manufacturer

**Mazak**

for Machine type

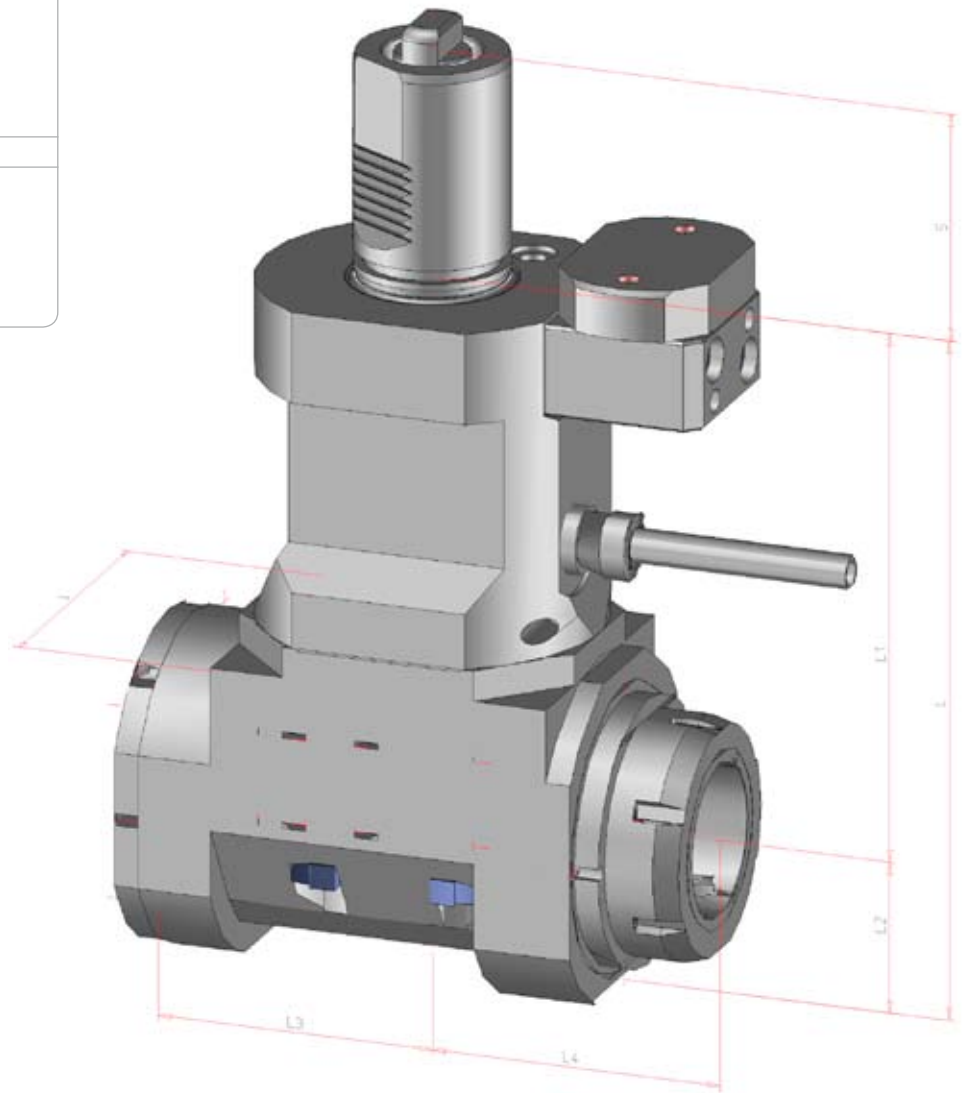
**MULTIPLEX 630 / 6300**

**MP**

630 - 12x  
6300 - 12x

Dimensions

Turret type	Star-type Turret
Shank	VDI 50
Drive	Tang
SW	12 mm



Order No.	Tool holder	Clamping range mm	Torque max.	n1/n2 (max.) (r.p.m.)	Gear Ratio	Coolant	L mm	L1 mm	L2 mm	L3 mm	L4 mm	S mm	T mm	MAZAK Ref. #
131597	ER 40	2,0-26	100 Nm	6.500 / 6.500	i = 1:1	internal	215	175	40	75,5	107,5	75	96	
101513	mi 63		100 Nm	6.500 / 6.500	i = 1:1	internal	224	175	49	91,5	96	75	98	
124626	SK 40		50 Nm	6.500 / 6.500	i = 1:1	external	210	160	50	85	81	75	96	