

Mazak

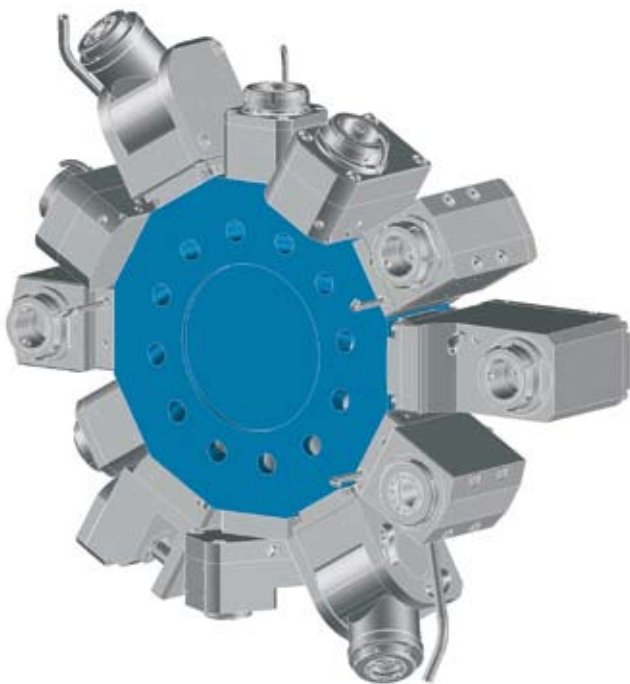
MULTIPLEX 610/6100/6200, HYPER QUADREX 150

Data

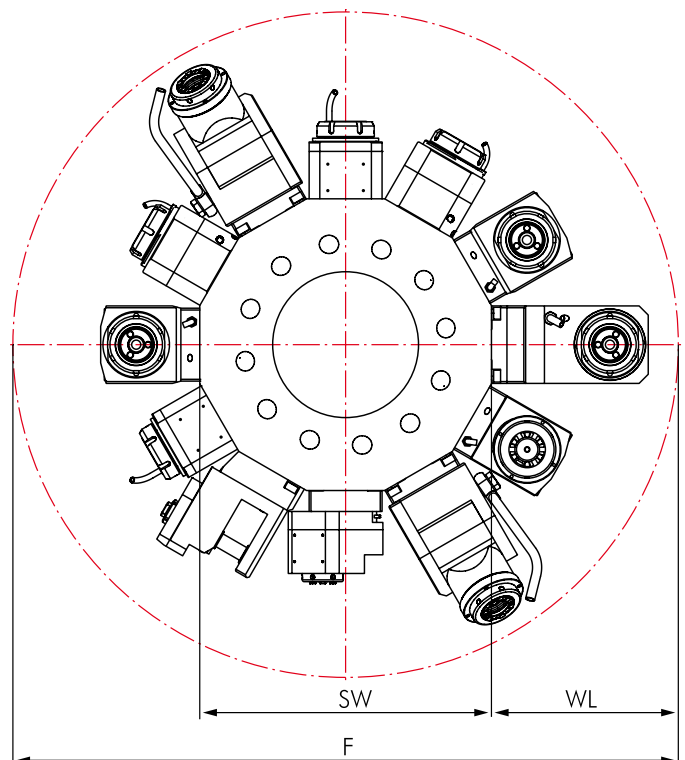
Machine type Series	Turret Stations
MP 610	12
MP 6100/6100 Y	16
MP 6200/6200 Y	16



Star-type Turret VDI 40



Interference Circles



Machine type Series	F	SW	WL
Multiplex 610 / 6100	596	286	155
Multiplex 6200	596	286	155

Mazak

MULTIPLEX 610/6100/6200, HYPER QUADREX 150

Driven Toolholders

	Page		Page
Straight Unit, Offset type	134		
		Angle Unit, adjustable 0-100°	136
			
Angle Unit	135		
		Y-Unit, adjustable ± 90°	137
			
		Saw Blade Holder	138
			

Options and Accessories

mi Toolholders		mi System Description Toolholders Accessories	275 278-283 283-284
Static Toolholders for MAZAK		Static Toolholders Accessories	289-293 293-294
Accessories		Collets DIN 6499 Threading Collets Wrenches Clamping Nuts Sleeves and Bushings	309 309 309 309 310



Straight Unit, Offset type

for Manufacturer

Mazak

for Machine type

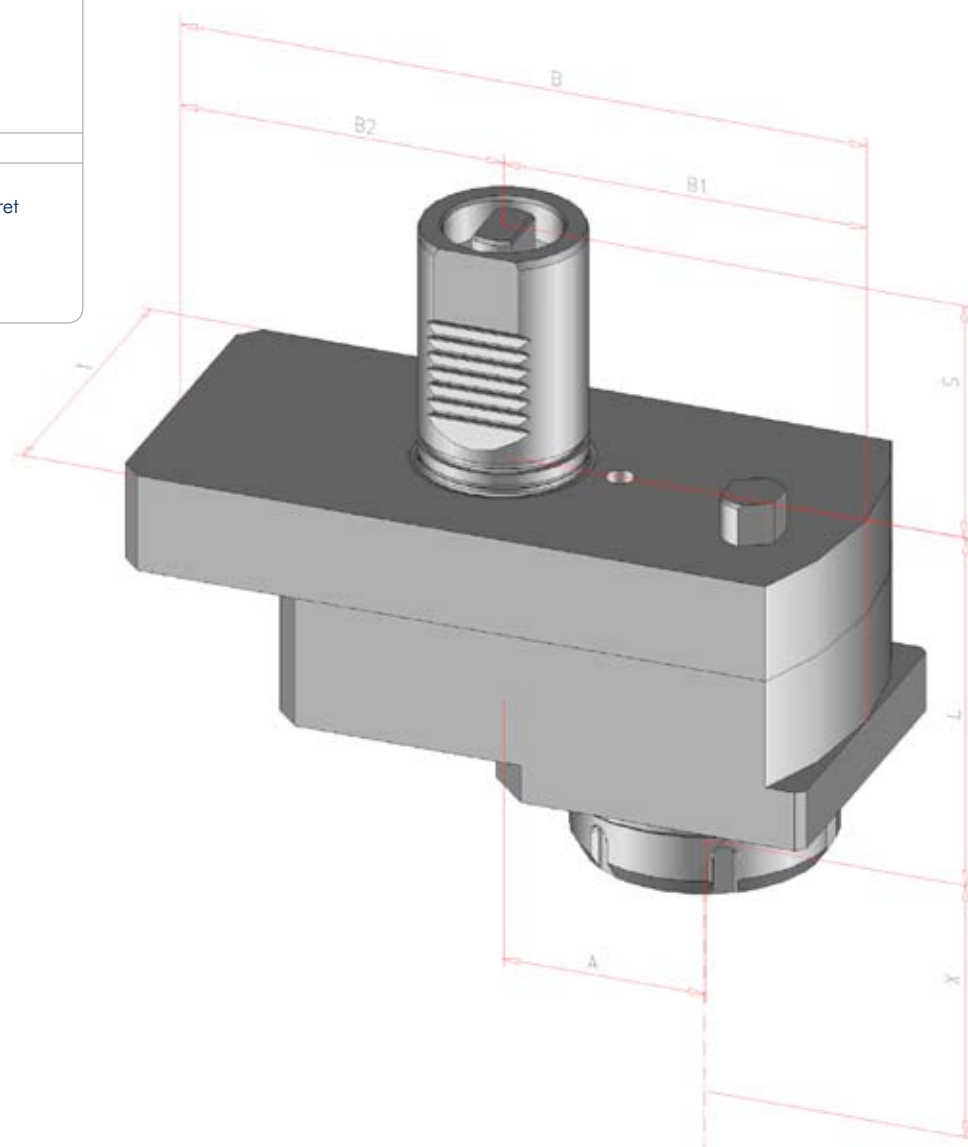
**MULTIPLEX 610/6100/6200
HYPER QUADREX 150**

MP

610 - 12x
6100 - 16x
6200 - 16x

Dimensions

Turret type	Star-type Turret
Shank	VDI 40
Drive	Tang
SW	10 mm



Order No.	Tool holder	Clamping range mm	Torque max.	n1/n2 (max.) (r.p.m.)	Gear Ratio	Coolant	X mm	L mm	A mm	B mm	B1 mm	B2 mm	S mm	T mm	MAZAK Ref. #
124018	ER 32	1,0-20	50 Nm	6.500 / 6.500	i = 1:1	external	65	90	50	132	90	42	60	80	
124252	ER 32	1,0-20	50 Nm	6.500 / 6.500	i = 1:1	internal	65	90	50	132	90	42	60	80	
124064	ER 25	0,5-16	25 Nm	6.500 / 13.000	i = 1:2	external	83,5	71,5	50	118	84	34	60	68	
124342	ER 25	0,5-16	25 Nm	6.500 / 13.000	i = 1:2	internal	65	90	50	132	90	42	60	80	
123681	ER 25	0,5-16	50 Nm	6.500 / 6.500	i = 1:1	internal	65	90	50	132	90	42	60	80	
124013	mi 50		50 Nm	6.500 / 6.500	i = 1:1	external	65	90	50	132	90	42	60	80	
123683	mi 50		50 Nm	6.500 / 6.500	i = 1:1	internal	65	90	50	132	90	42	60	80	

Angle Unit

for Manufacturer

Mazak

for Machine type

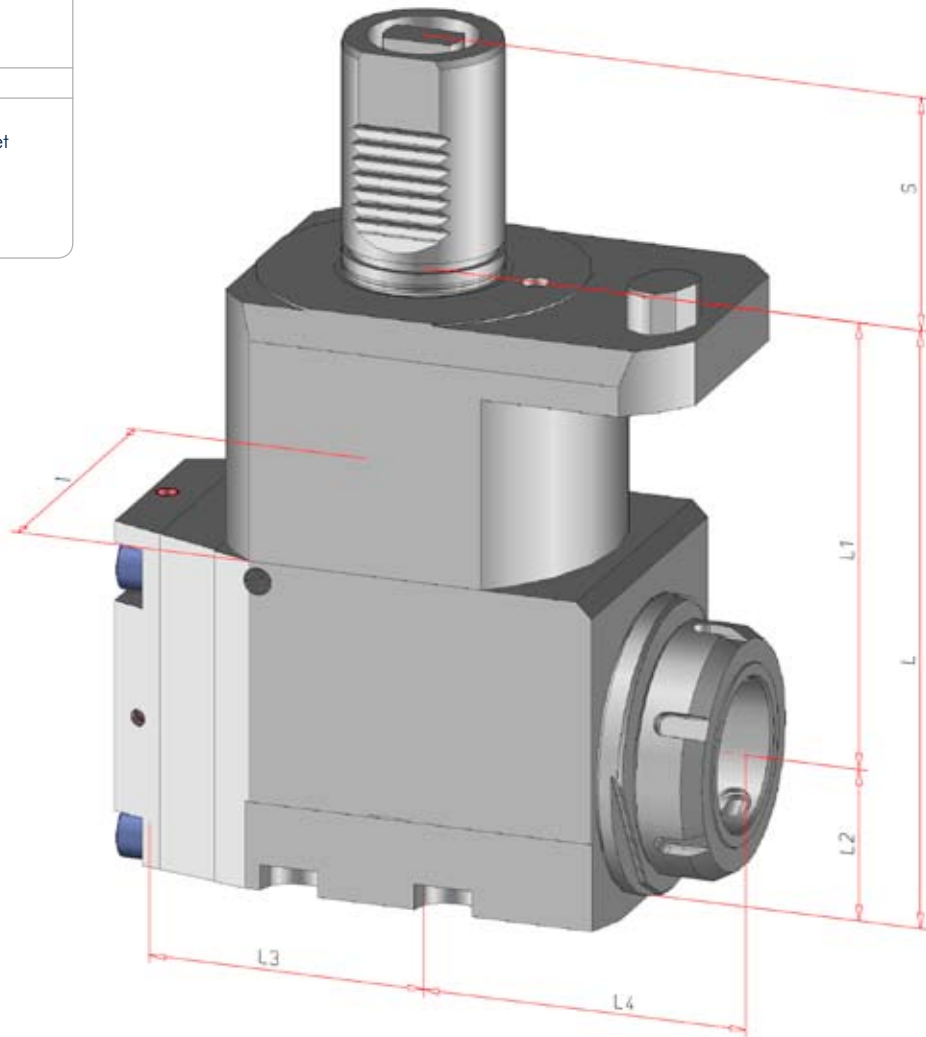
**MULTIPLEX 610/6100/6200
HYPER QUADREX 150**

MP

610 - 12x
6100 - 16x
6200 - 16x

Dimensions

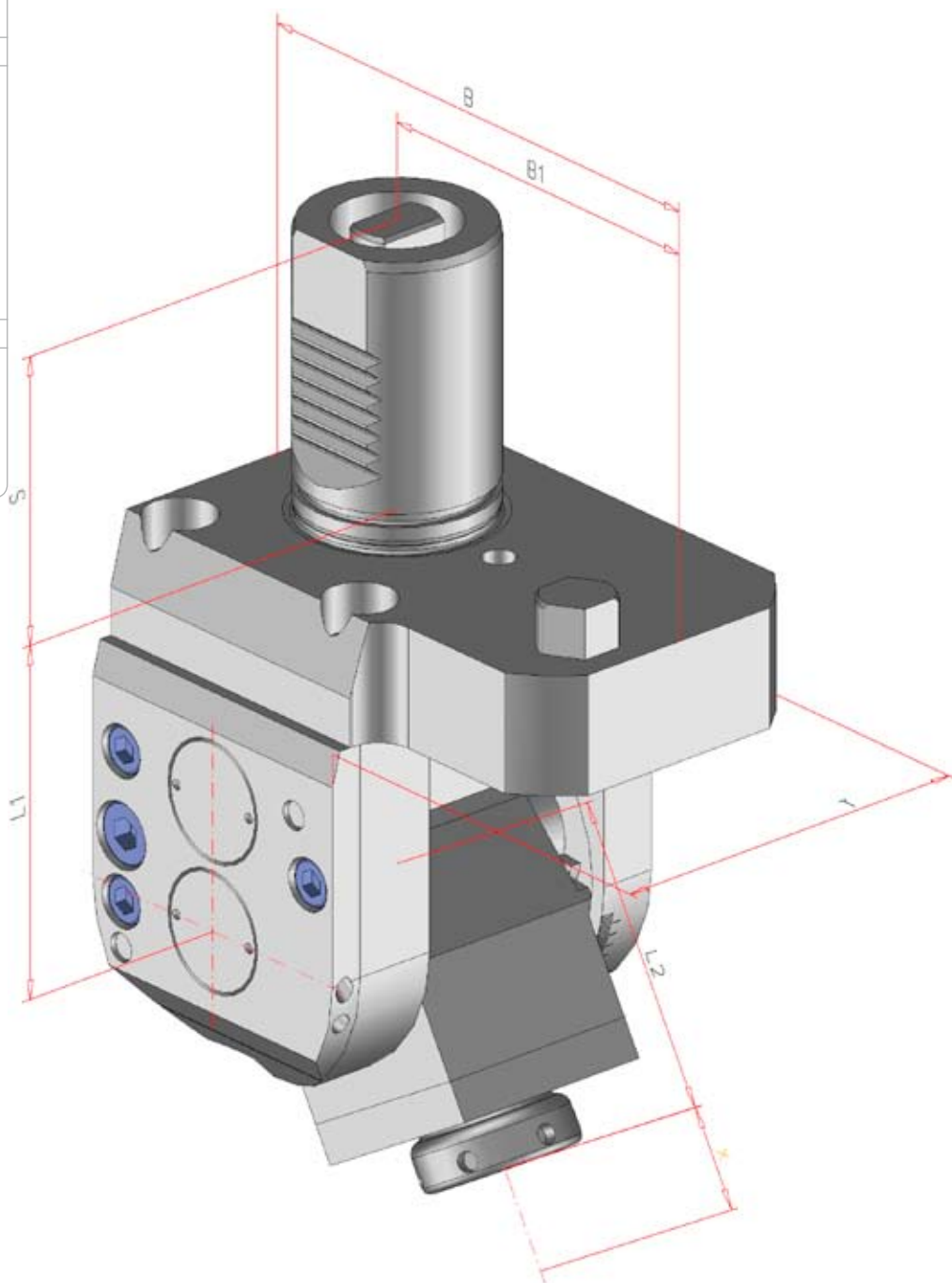
Turret type	Star-type Turret
Shank	VDI 40
Drive	Tang
SW	10 mm



Order No.	Tool holder	Clamping range mm	Torque max.	n1/n2 (max.) (r.p.m.)	Gear Ratio	Coolant	L mm	L1 mm	L2 mm	L3 mm	L4 mm	S mm	T mm	MAZAK Ref. #
124610	ER 32	1,0-20	50 Nm	6.500 / 6.500	i = 1:1	external	154	115	39	69	70	60	85	
124854	ER 32	1,0-20	50 Nm	6.500 / 6.500	i = 1:1	internal	154	115	39	71	70	60	85	
124856	mi 50		50 Nm	6.500 / 6.500	i = 1:1	internal	155	115	39	71	83,5	60	80	
124689	ER 25	0,5-16	25 Nm	6.500 / 13.000	i = 1:2	external	149	115	34	40	78	60	80	
124850	HF 20	1,0-20	50 Nm	6.500 / 6.500	i = 1:1	internal	149	115	39	71	81	60	80	

Angle Unit, adjustable 0-100°

for Manufacturer	
Mazak	
for Machine type	
MULTIPLEX 610/6100/6200 HYPER QUADREX 150	
MP 610 - 12x 6100 - 16x 6200 - 16x	
Dimensions	
Turret type	Star-type Turret
Shank	VDI 40
Drive	Tang
SW	10 mm



Order No.	Tool holder	Clamping range mm	Torque max.	n1/n2 (max.) (r.p.m.)	Gear Ratio	Coolant	X mm	L mm	L1 mm	L2 mm	B mm	S mm	T mm	MAZAK Ref. #
125024	ER 16	0,5-10	6 Nm	6.500 / 6.500	i = 1:1	external	20,5	134,5	73,5	61	114	60	80,5	
125051	ER 16	0,5-10	6 Nm	3.750 / 15.000	i = 1:4	external	20,5	134,5	73,5	61	114	60	80,5	

Y-Unit, adjustable $\pm 90^\circ$

for Manufacturer

Mazak

for Machine type

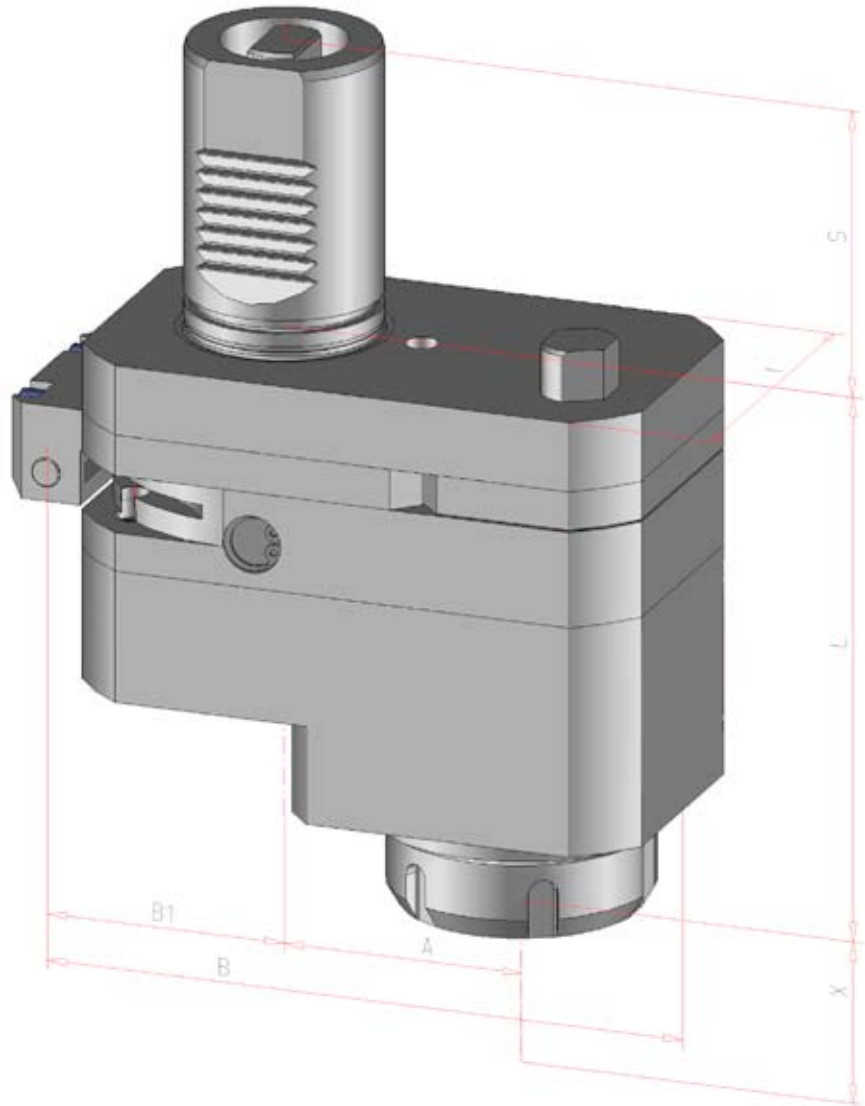
**MULTIPLEX 610/6100/6200
HYPER QUADREX 150**

MP

610 - 12x
6100 - 16x
6200 - 16x

Dimensions

Turret type	Star-type Turret
Type	$\pm 90^\circ$ continuous adjustable
Shank	VDI 40
Drive	Tang
SW	10 mm



Order No.	Tool holder	Clamping range mm	Torque max.	n1/n2 (max.) (r.p.m.)	Gear Ratio	Coolant	X mm	L mm	A mm	B mm	S mm	T mm	MAZAK Ref. #
124114	ER 25	0,5-16	25 Nm	6.500 / 6.500	i = 1:1	external	55	100	50	134	60	68	

Saw Blade Holder

for Manufacturer

Mazak

for Machine type

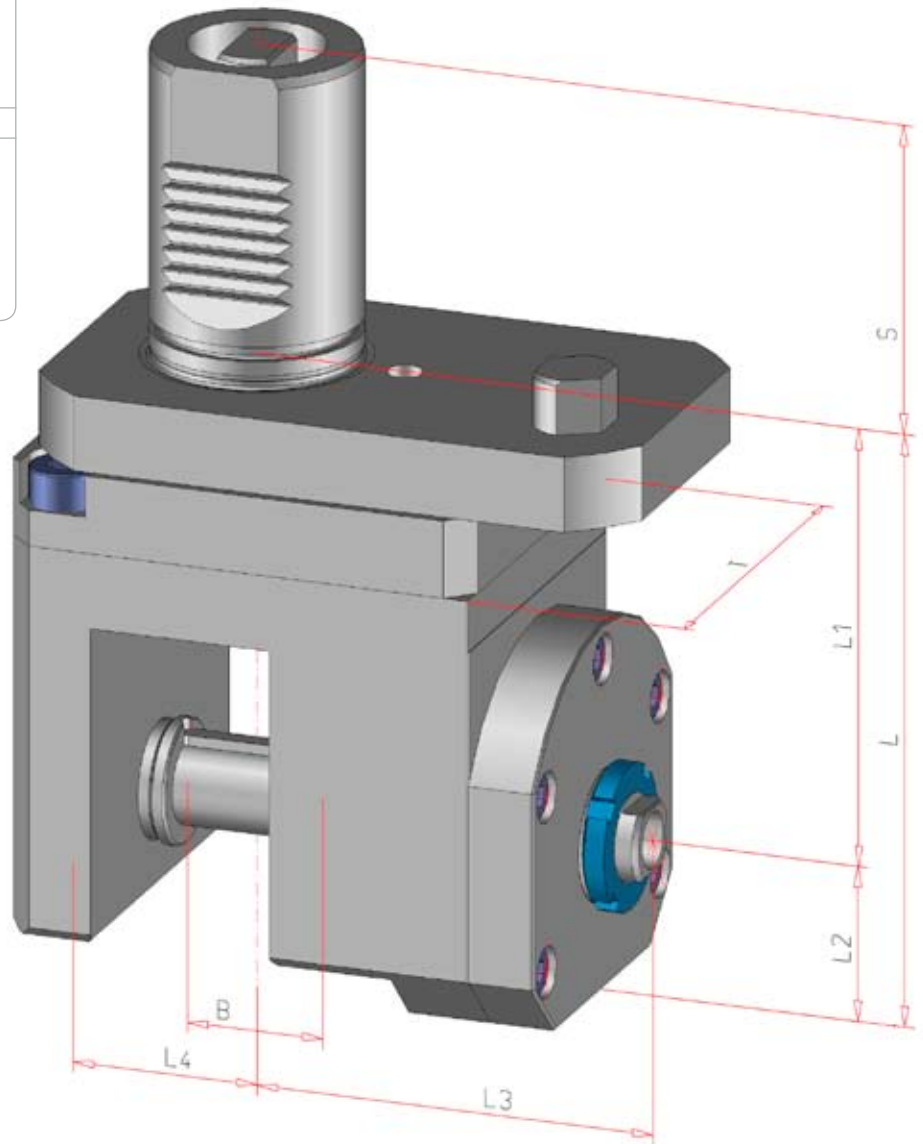
**MULTIPLEX 610/6100/6200
HYPER QUADREX 150**

MP

610 - 12x
6100 - 16x
6200 - 16x

Dimensions

Turret type	Star-type Turret
Shank	VDI 40
Drive	Tang
SW	10 mm



Order No.	Fitting dia. mm	Torque max.	n1/n2 (max.) (r.p.m.)	Gear Ratio	Coolant	L mm	L1 mm	L2 mm	L3 mm	L4 mm	B mm	S mm	T mm	MAZAK Ref. #
125101	22	20 Nm	6.500 / 2.450	i = 2,66:1	external	115	85	30	77,5	36	25	60	72	