

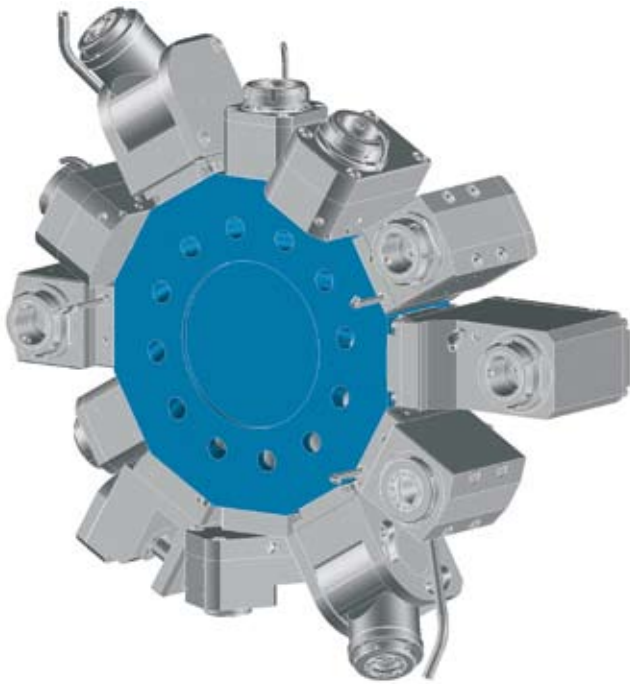
Mazak CYBERTECH TURN 4500 / 5500

Data

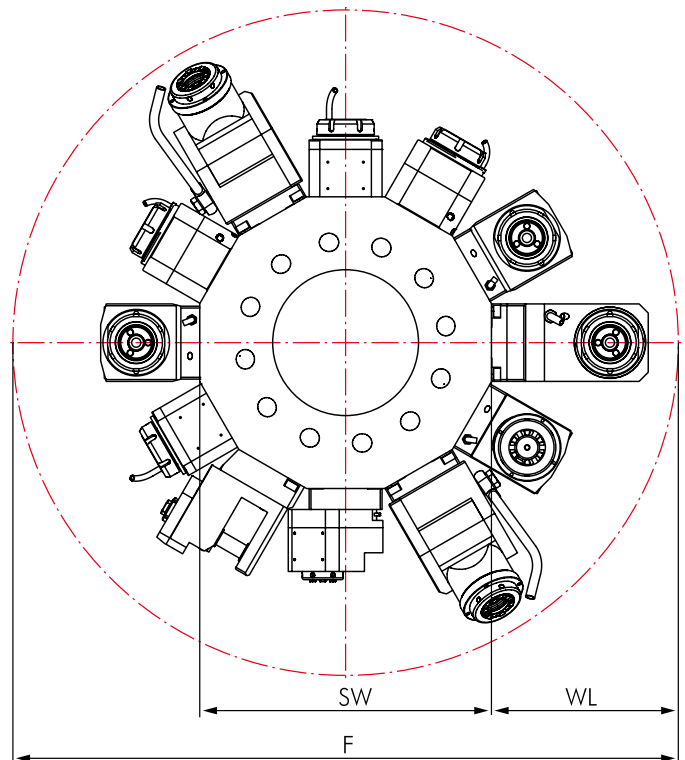
Machine type Series		Turret Stations
CT 4500	M / MT	12
CT 5500	M / MT	12



Star-type Turret „BMT“




Interference Circles



Machine type Series	F	SW	WL
CT 4500	860	360	250
CT 5500			

Driven Toolholders

	Page		Page
Straight Unit			154
Angle Unit			155

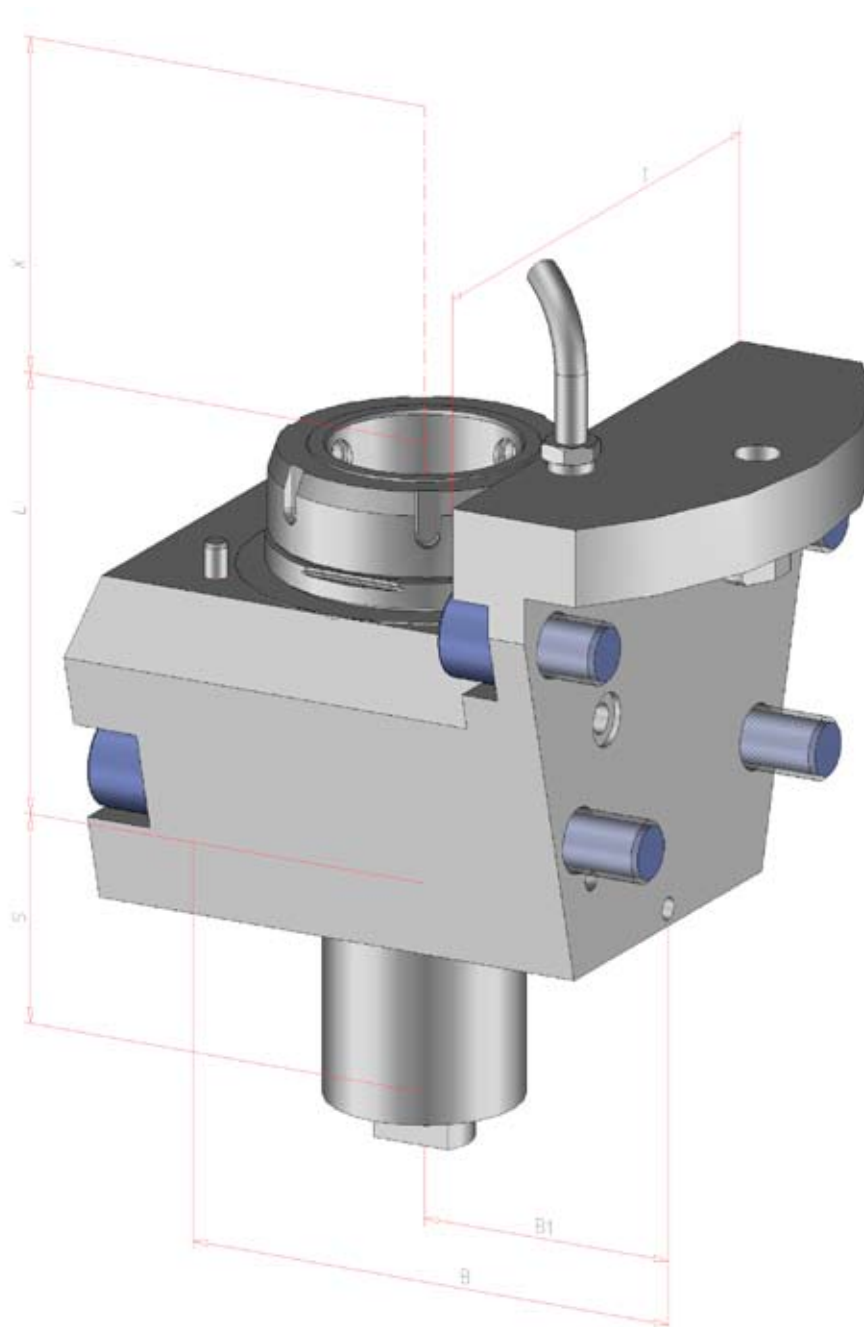
Options and Accessories

mi Toolholders		mi System Description Toolholders Accessories	275 278-283 283-284
Accessories		Collets DIN 6499 Threading Collets Wrenches Clamping Nuts Sleeves and Bushings	309 309 309 309 310



Straight Unit

for Manufacturer	
Mazak	
for Machine type	
CYBERTECH TURN 4500 / 5500 - M / MT	
CT 4500 M/MT - 12x 5500 M/MT - 12x	
Dimensions	
Turret type	Star-type Turret
Shank	BMT Ø 50 mm
Drive	Tang
SW	13,95 mm



Order No.	Tool holder	Clamping range mm	Torque max.	n1/n2 (max.) (r.p.m.)	Gear Ratio	Coolant	X mm	L mm	B mm	B1 mm	S mm	T mm	MAZAK Ref. #
124261	mi 63	-	150 Nm	3.000 / 3.000	i = 1:1	internal	136	114	132,5	68	54,23	146	

Angle Unit

for Manufacturer

Mazak

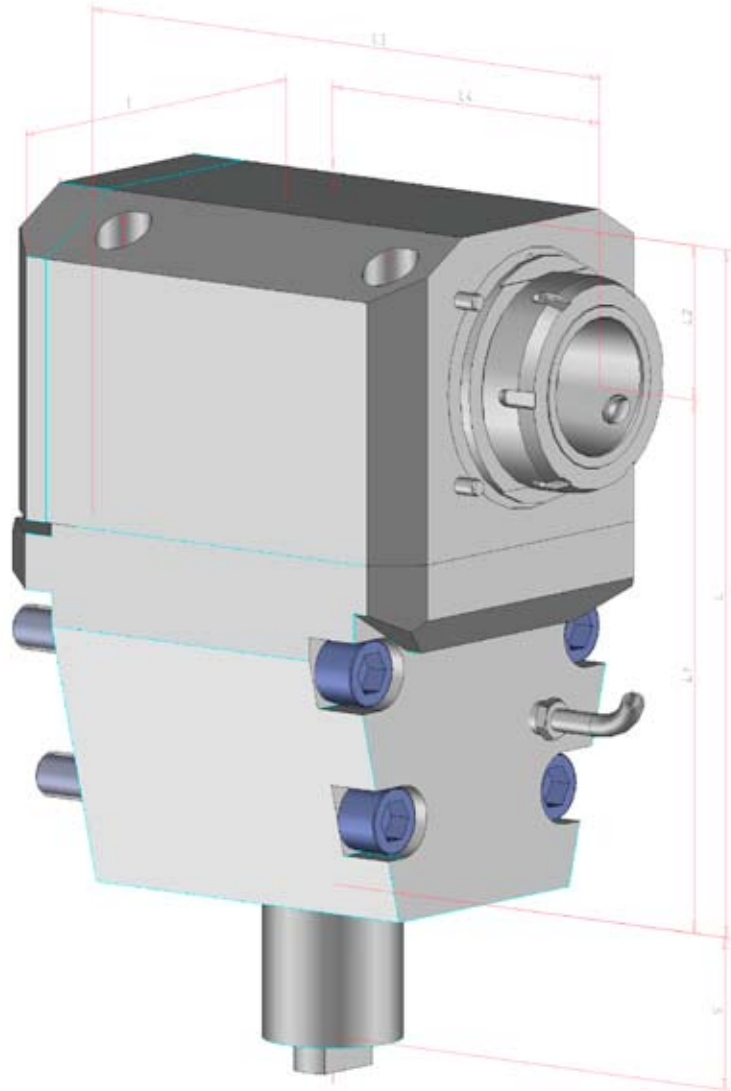
for Machine type

**CYBERTECH TURN
4500 / 5500 - M / MT**

CT
4500 M/MT - 12x
5500 M/MT - 12x

Dimensions

Turret type	Star-type Turret
Shank	BMT Ø 50 mm
Drive	Tang
SW	13,95 mm



Order No.	Tool holder	Clamping range mm	Torque max.	n1/n2 (max.) (r.p.m.)	Gear Ratio	Coolant	L mm	L1 mm	L2 mm	L3 mm	L4 mm	S mm	T mm	MAZAK Ref. #
124881	mi 63	-	150 Nm	3.000 / 3.000	i = 1:1	internal	149	94	55	94,5	120	54	146	-